

PERFORMANCE

- Display Size**
23.8"
- View Area**
526.8x296.4 mm
- Panel**
In-Plane Switching
- Backlight**
WLED
- Aspect Ratio**
16:9
- Resolution**
2560x1440
- Pixel Pitch**
0.2058x0.2058 mm
- Dot / Pixel Per Inch**
123 dpi
- View Angle (H / V)**
178° / 178°
- Response Time**
4ms (Extreme mode) / 6ms (Normal mode)
- Color Support**
16.7 Million
- Refresh Rate**
48Hz - 120Hz
- Brightness**
300 cd/m²
- Contrast Ratio**
1500:1
- Color Gamut**
99% sRGB, 99% BT.709
- Screen Surface Treatment**
Anti-glare
- Curvature**
Flat Panel
- Camera**
Modular Camera Support
- Microphone**
None
- Speakers**
Modular Speaker Support
- Power Consumption (Typical / Maximum)**
16.5W / 210W
- Power Adapter**
Integrated
- Touchscreen**
None

- Smart System**
None
- DESIGN**
- Stand**
Tilt, Swivel, Pivot, Height Adjust Stand
- Case Color**
Eclipse Black
- Side Bezel Width**
2 mm
- Mounting**
Supports VESA mount 100 x 100 mm
- ThinkCentre® M Series Support**
Tiny Support

- Pen**
None
- Dimensions (WxDxH)^[1]**
 - Lowest Position | 539.8 x 190.0 x 350.8 mm (21.25 x 7.48 x 13.81 inches)
 - Highest Position | 539.8 x 190.0 x 505.8 mm (21.25 x 7.48 x 19.91 inches)
 - Head Only | 539.8 x 45.3 x 315.8 mm (21.25 x 1.78 x 12.43 inches)
- Packaging Dimensions (WxDxH)**
730 x 123 x 420 mm (28.74 x 4.84 x 16.54 inches)
- Weight^[2]**
 - Monitor With Stand | 5.6 kg (12.4 lbs)
 - Monitor Head Only | 3.6 kg (8.0 lbs)

- Packaging Weight**
8.4 kg (18.4 lbs)
- CONNECTIVITY**
- USB Port**
x USB-C® (USB 10Gbps, DP 1.4 Alt Mode HBR3, PD3.1 140W, USB upstream), 1x USB-B (USB 5Gbps, USB upstream), 4x USB-A (USB 5Gbps, 1x BC1.2, USB downstream), 1x USB-C® (USB 5Gbps, 15WPD, USB downstream)

- Video Connector**
1x HDMI® 2.1 TMDS, 1x DP 1.4 (HBR3), 1x DP 1.4 Out, 1x USB-C® (10Gbps, DP 1.4 Alt Mode HBR3)
- Network Connectivity**
1x RJ45, Ethernet (10M/100M/1000M/2500M)

- SERVICE**
- Base Warranty**
3-year
- CERTIFICATIONS**

- Environmental Certification**
ENERGY STAR® Certified, TCO 10.0, TCO Edge 2.1, EU Energy Efficiency Level (Level-D), EPEAT™ Gold
- Ergonomic Certification**
TÜV Rheinland® Eye Comfort 5 Stars, Eyesafe® Display 2.0, TÜV Low Blue Light (Hardware solution)
- Sync Technology**
None
- Special Features**
 - HDR10 Compliance
 - Factory Calibration: Avg. Delta E<2 at sRGB
 - Lenovo® ThinkColour (Lenovo® Accessories and Display Manager) Support
Lenovo® ThinkColour supports Windows® 10 & 11, Mac OS (functions vary across systems).
Lenovo® Accessories and Display Manager is formerly Lenovo® Display Control Center.
 - KVM Switch (with eKVM)
 - LDFM (Lenovo® Display Fleet Manager)
 - Mirrored Power Button
 - Multi-sync
 - Natural Low Blue Light
 - Smart Power

- SOFTWARE**
- Operating System**
Support Windows® 10, Windows® 11

- ACCESSORIES**
- Video Cables**
DP cable, USB-C® to USB-C® Gen 2 cable, USB-B to USB-A Gen 1 cable

- MODEL**
- Announce Date** : 2025-06-12 **Region** : EMEA
- EAN / UPC / JAN** : 0198156544735 / 198156544735 / None

- Note:
 - [1] The system dimensions may vary depending on configurations.
 - [2] The system weight is approximate and based on results in Lenovo lab, which varies depending on the source of component, variance of the distribution of each component, and manufacturing process. It may not be the exact weight for each specific model.
- Lenovo reserves the right to change specifications without notice.
- To see more note information, please access the [web page](#).

Premium Care - Advanced Support from Real People. Real Fast.



REAL PERSON

Choose how you want to reach us - through the phone, chat or email - our expert technicians will take care of you.



REAL FAST

Highly trained technicians will provide you real-time solutions, whatever the issue, on your first contact. If needed, our team will schedule an onsite visit for the next business day.



HASSLE FREE

'Getting started' and 'how-to' assistance for hardware and software. Easy solutions that are simple to reach - that's how Premium Care delivers you the ideal support experience.



PC HEALTH CHECK

Free annual PC Health Check that allows our experts to spot issues before you do so they can resolve them quickly and help you avoid PC problems.

Accidental Damage Protection - Protection of your PC from the unexpected.

Experience shows that a significant portion of devices may be damaged (and not covered under warranty) in the first three years. Lenovo's Accidental Damage Protection service covers accidents beyond the system warranty such as drops, spills, bumps and even electrical surges. Make sure your new device has maximum protection, avoid unplanned costs and get peace of mind.

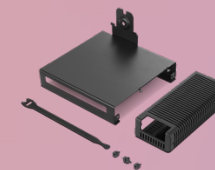
Base Warranty – Included with the systems you purchase, default 1- or 3-year coverage window.

Warranty Extensions & Upgrades – Service and protection that's right for your circumstances.

- Pick Up & Return Courier
- Onsite Support
- Technician Installed Customer
- Replaceable Unit Service
- International Warranty Upgrade

Lenovo may not offer the products, services or features discussed in this document in all regions. Lenovo may withdraw an offering at any time. Consult your local representative for information on offerings available in your area. Lenovo reserves the right to change specifications or other product information without notice. Lenovo is not responsible for photographic or typographical errors. Lenovo provides this publication "as is" without warranty of any kind, either express or implied, including the implied warranties of merchantability or fitness for a particular purpose.

Recommended Accessories



ThinkCentre Tiny Mounting Kit

4XFIR07369

The ThinkCentre Tiny Mounting Kit is a practical and versatile solution specifically designed to house the Tiny PC securely. Its innovative design allows seamless attachment to the bottom of P/T series monitor arms, p...



Lenovo Essential FHD Webcam

4XC1B34802

The Lenovo FHD Webcam is powered by a Full HD 1080P 2 Megapixel CMOS camera that allows your friends, family, and colleagues to see you as clear as day, even when they are worlds away. With full stereo dual-mics that ...

Please click [here](#) to view the full list of accessories.

Lenovo

PSREF
Product Specifications
Reference