

# OMEN Gaming Laptop 16-n0001sa



Maximum power meets maximum cool.

The OMEN Laptop is ready to go wherever you are. Enjoy desktop-level power with an AMD processor<sup>1</sup> and a modern graphics card, both regulated by OMEN Tempest Cooling. The screen is equally impressive with high resolution and TUV Eyesafe Low Blue Light<sup>2</sup>. This gaming laptop even lets you expand with plenty of USB ports<sup>3,4</sup>.

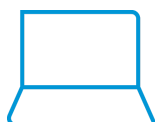


\*Product image may differ from actual product



## Desktop levels of power

Your processor<sup>1</sup> and graphics stay cool even when your gameplay heats up with OMEN Tempest Cooling.



## Immersive 16.1" screen

Escape into a massive screen with 3-sided bezel edges, high resolution, and TUV Eyesafe Low Blue Light<sup>2</sup>.



## Room for peripherals

Hook up an external drive, additional GPUs, or your smartphone with plenty of USB ports<sup>4</sup>.



# OMEN Gaming Laptop 16-n0001sa

---

## Featuring

### Get a fresh perspective

Windows 11 provides a calm and creative space where you can pursue your passions through a fresh experience. From a rejuvenated Start menu, to new ways to connect to your favorite people, news, games, and content—Windows 11 is the place to think, express, and create in a natural way.<sup>5</sup>

### AMD Ryzen™ 6000 Series Processors

Speed meets endurance when you play with a gaming laptop powered by AMD Ryzen™ processors. Seize the pure performance you need to win, without compromising battery life.<sup>6</sup>

### NVIDIA® GeForce RTX™ 3060

The GeForce RTX™ 3060 lets you take on the latest games using the power of Ampere—NVIDIA's 2nd generation RTX architecture. Get incredible performance with enhanced Ray Tracing Cores and Tensor Cores, new streaming multiprocessors, and high-speed G6 memory.<sup>7</sup>

### AMD FreeSync™ technology

See and feel the difference of fluid, responsive gameplay. By synchronizing the refresh rate with your GPU, AMD FreeSync™ makes display stutter, input lag, and screen tears ancient history.<sup>8</sup>

### 144 Hz FHD anti-glare display

Reduce frustrating lag and image ghosting with a display that combines a 144 Hz refresh rate and a 1080p resolution for smooth, crisp gameplay.<sup>9</sup>

### Eyesafe® Certified Display

Eyesafe® certified displays meet TÜV low blue light requirements and Eyesafe® standards for protecting your eyes from harmful blue light without distorting colors. Laptops with integrated Eyesafe® displays help reduce eyestrain and improve eye comfort when working for long periods of time.

### HP QuickDrop

Wirelessly transfer photos, videos, documents and more between your PC and mobile device.

### DTS: X® Ultra Technology

By producing authentic, spatially accurate 3D sound through any headset, this technology offers specially tuned audio modes for different game types to provide immersion for the best entertainment experience possible.<sup>10</sup>

### An exceptionally rich audio experience

With HP Dual Speakers, HP Audio Boost, and custom tuning by the experts at Bang & Olufsen, entertainment comes to life with sound you can feel. Awaken your senses with PC audio perfection.

### Ocean-bound plastic

Built with the environment in mind, our laptop design includes sustainable materials like ocean-bound plastic in the speaker enclosure and recycled aluminum.<sup>11</sup>

### Keyboard keycaps contain post-consumer recycled plastic

We're bringing a more sustainable design to our keyboards by using keycaps made with post-consumer recycled plastic.<sup>12</sup>

### HP Fast Charge

When your laptop is low on power, no one has time to wait hours to recharge. Power down your device and go from 0 to 50% charge in approximately 30 minutes.<sup>13</sup>

### Effortlessly connected

Enjoy faster speeds, improved performance, greater capacity and lower latencies than earlier iterations with Wi-Fi 6E technology.<sup>14</sup>

### MU-MIMO supported

If you have several MU-MIMO devices in your home, MU-MIMO support works in combination with a MU-MIMO router to maximize network traffic for a smoother online experience.

### HP Wide Vision HD Camera

The 88-degree, wide-angle field of view lets you video chat with the entire family or group of friends in crystal clear detail.<sup>15</sup>

### SuperSpeed USB Type-A 5Gbps signaling data rate

Plug in your external storage with this SuperSpeed USB Type-A port, featuring 5Gbps signaling data rate.<sup>16</sup>

### ExpressVPN

Hide your IP address and encrypt your network data so no one can see what you're doing. Reduce the threat of hacking even when browsing on public Wi-Fi.<sup>17</sup>

### McAfee® LiveSafe™

Free 12-month subscription of McAfee® LiveSafe™ service included. McAfee® LiveSafe™ service enriches your digital life by protecting your data, identity and all your devices so you can connect with confidence.<sup>19</sup>

### PCIe NVMe™ M.2 SSD storage

Boot up in seconds with lightning fast speed with up to 1 TB PCIe NVMe™ M.2 SSD storage.

### Dual channel memory

With dual channel technology, two channels work simultaneously to double the communication speed between the memory controller and the RAM increasing system performance.

### Four Zone RGB keyboard

Allows you to backlight 4 independent zones with different RGB lighting. WASD keys are outlined to highlight key controls. It's all easily controlled through the OMEN Gaming Hub.

### HP Imagepad with multi-touch gesture

This true multi-touch touchpad supports four finger gestures and lets you scroll, zoom, and navigate with a simple touch.

# OMEN Gaming Laptop 16-n0001sa



\*Product image may differ from actual product

## Specifications

### Performance

#### Operating system

Windows 11 Home

#### Processor

AMD Ryzen™ 7 6800H (up to 4.7 GHz max boost clock, 16 MB L3 cache, 8 cores, 16 threads)<sup>6,7</sup>

Processor family: AMD Ryzen™ 7 processor

#### Chipset

AMD Integrated SoC

#### Memory

16 GB DDR5-4800 MHz RAM (2 x 8 GB)

Transfer rates up to 4800 MT/s.

Number of User-accessible Memory Slots: 2

#### Storage

1 TB PCIe® NVMe™ TLC M.2 SSD

Optical drive not included

25 GB Dropbox storage for 12 months<sup>1</sup>

#### Graphics

Discrete: NVIDIA® GeForce RTX™ 3060 Laptop GPU (6 GB GDDR6 dedicated)<sup>8</sup>; NVIDIA® Max-Q technology; Powered by NVIDIA Ampere architecture

#### Audio

Audio by Bang & Olufsen; DTS:X® Ultra; Dual speakers; HP Audio Boost

#### Display

40.9 cm (16.1") diagonal, FHD (1920 x 1080), 144 Hz, 7 ms response time, IPS, micro-edge, anti-glare, Low Blue Light, 300 nits, 100% sRGB<sup>17,21,28</sup>

#### Screen-to-body ratio

82.12%<sup>18</sup>

#### Power

280 W Smart AC power adapter;

#### Battery type

6-cell, 83 Wh Li-ion polymer<sup>23</sup>

315 g

#### Battery and Power

Up to 9 hours<sup>3</sup>;

Supports battery fast charge; approximately 50% in 30 minutes<sup>5</sup>

#### Maximum battery life video playback

Up to 11 hours and 45 minutes<sup>10</sup>

### Connectivity

#### Network interface

Integrated 10/100/1000 GbE LAN

#### Wireless connectivity

MediaTek Wi-Fi 6E MT7922 (2x2) and Bluetooth® 5.2 combo (Supporting Gigabit data rate)<sup>11,12</sup>

MU-MIMO supported

#### Ports

2 SuperSpeed USB Type-C® 10Gbps signaling rate (USB Power Delivery, DisplayPort™ 1.4, HP Sleep and Charge); 1 SuperSpeed USB Type-A 5Gbps signaling rate (HP Sleep and Charge); 2 SuperSpeed USB Type-A 5Gbps signaling rate; 1 HDMI 2.1; 1 RJ-45; 1 AC smart pin; 1 headphone/microphone combo<sup>19,42</sup>

#### Expansion slots

1 multi-format SD media card reader

#### Webcam

HP Wide Vision 720p HD camera with temporal noise reduction and integrated dual array digital microphones

### Design

#### Product color

Mica silver cover and base, mica silver aluminum keyboard frame

Paint finish cover and base, anodized keyboard frame

### Software

#### HP apps

HP Connection Optimizer; HP QuickDrop; HP Support Assistant; MyHP; OMEN Gaming Hub

#### Software

ExpressVPN (30 day free trial); LastPass Premium (30 day free trial)<sup>22</sup>;

12-month McAfee LiveSafe™ offer with this product<sup>2</sup>;

1 month trial for new Microsoft 365 customers<sup>24</sup>

#### Service & support

1-month Adobe free trial offer<sup>25,43</sup>

12-month McAfee LiveSafe™ offer with this product<sup>2</sup>

### Additional information

#### Part Number

P/N: 6T9U8EA #ABU

UPC/EAN code: 196786462962

#### Ecolabels

EPEAT® Silver registered<sup>27</sup>

ENERGY STAR® certified

#### Sustainable impact specifications:

Ocean-bound plastic in bezel and speaker enclosure(s); Recycled metal in keyboard frame; Keyboard keycaps and scissors contain post-consumer recycled plastic<sup>39,40,41</sup>

#### Weight

2.41 kg;

Packed: 3.86 kg

Weight Note: Weight varies by configuration

#### Dimensions

36.9 x 24.8 x 2.3 cm;

Packed: 6.9 x 55.2 x 34.5 cm

Dimension Note: Dimensions vary by configuration

#### Manufacturer Warranty

1 year (1/1/0) limited warranty includes 1 year of parts and labor. No on-site repair. Terms and conditions vary by country. Certain restrictions and exclusions apply.

#### Keyboard

Full-size, 4-zone RGB backlit, mica silver keyboard and 26-Key Rollover Anti-Ghosting Key technology

HP Imagepad with multi-touch gesture support

#### Features

Support AMD Radeon FreeSync™ technology<sup>29</sup>

#### Security management

Trusted Platform Module (Firmware TPM) support

Fingerprint reader not available

#### Sensors

IR Thermal sensor; Ambient light sensor

# OMEN Gaming Laptop 16-n0001sa

## Recommended accessories

\* Not included.



**OMEN Blast Headset**  
1A858AA



**OMEN by HP Mouse Pad**  
300  
1MY15AA



**OMEN Vector Wireless**  
**Mouse**  
2B349AA

## Warranty services\*



**3-year pickup and return**  
UM963E

## Key Selling Points Footnotes

- <sup>1</sup> Multi-core is designed to improve the performance of certain software products. Not all customers or software applications will necessarily benefit from the use of this technology. Performance and clock frequency will vary depending on application workload and your hardware and software configurations. AMD's numbering is not a measurement of clock speed.
- <sup>2</sup> Eyesafe certified. See <https://www.tuv.com/world/en/eye-comfort.html> for more details.
- <sup>3</sup> USB Type-C® and USB-C® are trademarks of USB Implementers Forum.
- <sup>4</sup> For optimal performance and battery chargeability while gaming and rendering, use the power adapter that ships with the PC. You can use the 100W/20V Type-C® adapter or power bank when running light loading tasks. System-off charging is only supported on 20V Type-C® adapter or power bank.

## Feature Messaging Footnotes

- <sup>5</sup> Not all features are available in all editions or versions of Windows. Systems may require upgraded and/or separately purchased hardware, drivers, software or BIOS update to take full advantage of Windows functionality. Windows is automatically updated and enabled. High speed internet and Microsoft account required. ISP fees may apply and additional requirements may apply over time for updates. See <http://www.windows.com>.
- <sup>6</sup> Multi-core is designed to improve performance of certain software products. Not all customers or software applications will necessarily benefit from use of this technology. Performance and clock frequency will vary depending on application workload and your hardware and software configurations. AMD's numbering is not a measurement of clock speed.
- <sup>7</sup> ©2022 NVIDIA Corporation. NVIDIA, the NVIDIA logo, GeForce, and GeForce RTX are registered trademarks and/or trademarks of NVIDIA Corporation in the United States and other countries. All other trademarks and copyrights are the property of their respective owners.
- <sup>8</sup> FreeSync™ is only available when it is connected on Display Port or HDMI port. FreeSync™ is an AMD technology enabled on FHD or QHD displays and is designed to eliminate stuttering and/or tearing in games and videos by locking a display's refresh rate to the frame rate of the graphics card. Monitor, AMD Radeon™ Graphics and/or AMD A-Series APU compliant with DisplayPort™ Adaptive-Sync required. AMD Catalyst™ 15.2 Beta (or newer) required. Adaptive refresh rates vary by display.
- <sup>9</sup> All performance specifications represent the typical specifications provided by HP's component manufacturers; actual performance may vary either higher or lower.
- <sup>10</sup> Listening to personal stereo equipment at full volume for long periods can damage the user's hearing. To reduce the risk of hearing damage, lower the volume and amount of time listening at full volume.
- <sup>11</sup> Percentage of ocean-bound plastic contained in each component varies by product. Laptops manufactured with recycled aluminum material in product cover. Percent of recycled aluminum varies by product.
- <sup>12</sup> Percentage of post-consumer recycled plastic contained in keycap varies by product.
- <sup>13</sup> Recharges your battery up to 50% within 30 minutes when the system is off (using "shut down" command). Recommended for use with the HP adapter provided with the notebook, not recommended with a smaller capacity battery charger. After charging has reached 50% capacity, charging speed will return to normal speed. Charging time may vary +/-10% due to System tolerance. Available on select HP products. See <http://store.hp.com> for a full list of product features.
- <sup>14</sup> Wireless access point and internet service required and sold separately. Availability of public wireless access points limited. Wi-Fi 6 is backwards compatible with prior 802.11 specs. Wi-Fi 6 is designed to support gigabit data rate when transferring files between two devices connected to the same router. Requires a wireless router, sold separately, that supports 80MHz and higher channels. Wi-Fi 6 (802.11ax) is not supported in Belarus where Wi-Fi settings will be optimized to local regulatory requirements (802.11ac).
- <sup>15</sup> Features may require software or other 3rd party applications to provide the described functionality.
- <sup>16</sup> Actual throughput may vary.
- <sup>17</sup> Free 30-day trial, switch to a paid service at the end of the trial period. Each paid subscription grants you one (1) license to use on three (3) different devices at any given time. See [www.expressvpn.com](http://www.expressvpn.com) for more details.
- <sup>18</sup> Internet service required and not included. Subscription required after the 12 month.

## Technical Specifications Footnotes

- <sup>1</sup> 25 GB of free Dropbox storage for 12 months from date of registration. For complete details and terms of use, including cancellation policies, visit the Dropbox website at <https://www.dropbox.com/help/space/hp-promotion>. Internet service required and not included.
- <sup>2</sup> Free 1-year subscription of McAfee LiveSafe service included. Internet access required and not included. Subscription required after expiration.
- <sup>3</sup> Windows MobileMark 18 Battery life will vary depending on various factors including product model, configuration, loaded applications, features, use, wireless functionality, and power management settings. The maximum capacity of the battery will naturally decrease with time and usage. See <https://bapco.com/products/mobilemark-2018/> for additional details.
- <sup>5</sup> Recharges your battery up to 50% within 30 minutes when the system is off (using "shut down" command). Recommended for use with the HP adapter provided with the notebook, not recommended with a smaller capacity battery charger. After charging has reached 50% capacity, charging speed will return to normal speed. Charging time may vary +/-10% due to System tolerance. Available on select HP products. See <http://store.hp.com> for a full list of product features.
- <sup>6</sup> Multi-core is designed to improve performance of certain software products. Not all customers or software applications will necessarily benefit from use of this technology. Performance and clock frequency will vary depending on application workload and your hardware and software configurations. AMD's numbering is not a measurement of clock speed.
- <sup>7</sup> Max Boost clock frequency performance varies depending on hardware, software and overall system configuration.
- <sup>8</sup> NVIDIA® Max-Q Design can help reduce system heat and noise in thinner form factor PCs. Form factor design and thickness of the system will vary. Overall graphics performance may be lower than alternative graphics solutions that do not utilize Max-Q design.
- <sup>10</sup> Battery life tested by HP using continuous FHD video playback, 1080p (1920x1080) resolution, 150 nits brightness, system audio level at 17%, player audio level at 100%, played full-screen from local storage, headphone attached, wireless on but not connected. Actual battery life will vary depending on configuration and maximum capacity will naturally decrease with time and usage.
- <sup>11</sup> Wi-Fi 6E is designed to support gigabit data rate when transferring files between two devices connected to the same router. Requires a wireless router, sold separately.
- <sup>12</sup> Wi-Fi 6E requires a Wi-Fi 6E router, sold separately, to function in the 6GHz band. Availability of public wireless access points limited. Wi-Fi 6E is backwards compatible with prior 802.11 specs. And available in countries where Wi-Fi 6E is supported.
- <sup>17</sup> All performance specifications represent the typical specifications provided by HP's component manufacturers; actual performance may vary either higher or lower.
- <sup>18</sup> Percent of active plus nonactive viewing area to active viewing area plus border. Measure with lid vertical to the desk.
- <sup>19</sup> For best results with HP Sleep and Charge, use a USB charging protocol standard cable or cable adapter with an external device.
- <sup>21</sup> TÜV Low Blue Light is the Display Compliance Test Specification quality. See <https://www.certipedia.com/?locale=en#search> for more details.
- <sup>23</sup> Actual battery Watt-hours (Wh) will vary from design capacity. Battery capacity will naturally decrease with shelf life, time, usage, environment, temperature, system configuration, loaded apps, features, power management settings and other factors.
- <sup>24</sup> Must activate within 180 days of Windows activation.
- <sup>25</sup> Offer available worldwide (excluding China and embargoed countries or other countries identified as restricted by applicable law or regulation) to new and existing subscribers who are 18+. Click on the Adobe icon in the start menu to redeem a 1-month free trial membership for select Adobe software. The software is tied to the device and is not transferrable. If you would like to sign up for an auto-renewing subscription, you can provide your payment method at sign-up. By adding a payment method, your subscription will automatically renew at the then current rate on your renewal date until you cancel. If you cancel before the end of the one-month free trial, you won't be charged. You can cancel your subscription anytime via your Adobe Account page or by contacting Customer Support. Please see current prices for Adobe Spark and the remaining Adobe products available in this offer. Offer not available to Education, OEM, or volume licensing customers. Subject to availability where the recipient resides. Additional terms and conditions may apply. VOID WHERE PROHIBITED OR RESTRICTED BY LAW.
- <sup>27</sup> Based on U.S. EPEAT® registration according to IEEE 1680.1-2018 EPEAT®. EPEAT® status varies by country. Visit [www.epeat.net](http://www.epeat.net) for more information.
- <sup>28</sup> Eyesafe® Display for Low Blue Light is the Display Compliance Test Specification quality. See <https://eyesafe.com> for more details.
- <sup>29</sup> FreeSync™ is only available when it is connected on Display Port or HDMI port. FreeSync is an AMD technology is enabled on FHD or QHD displays and is designed to eliminate stuttering and/or tearing in games and videos by locking a display's refresh rate to the frame rate of the graphics card. Monitor, AMD Radeon™ Graphics and/or AMD A-Series APU compliant with DisplayPort™ Adaptive-Sync required. AMD Catalyst™ 15.2 Beta (or newer) required. Adaptive refresh rates vary by display.
- <sup>39</sup> Percentage of ocean-bound plastic contained in each component varies by product.
- <sup>40</sup> Laptops manufactured with recycled metal material in product cover. Percentage of recycled metal varies by product.
- <sup>41</sup> Keyboard components contain post-consumer recycled plastic. Percentage of post consumer recycled contained in each component varies by product.
- <sup>42</sup> For optimal performance and battery chargeability while gaming and rendering, use the power adapter that ships with the PC. You can use the 100W/20V Type-C adapter or power bank when running light loading tasks. System-off charging is only supported on 20V Type-C adapter or power bank.

